

**INSIDE THIS  
ISSUE:**

**HISTORY OF  
BRIDGEWATER  
HALL**

When and how it was  
built. See behind the  
scenes. **Page 6**

**TAI-CHI FOR  
BEGINNERS**

A new group is  
starting up. **Page 8**

**CREATIVE  
PHOTOGRAPHY  
EXHIBITION**

The creative  
photography group  
puts on an exhibition  
at The Parsonage.  
**Page 9**

**FIND THE MISSING  
LINKS**

Try this month's quiz.  
**Page 12**



Check out our website

Registered Charity Number  
**1168597**

Web: [www.south-manchester.u3asite.uk](http://www.south-manchester.u3asite.uk)



[www.facebook.com/groups/807060236097165](https://www.facebook.com/groups/807060236097165)



**The Bridgewater Hall**

The history of Bridgewater Hall is told in this newsletter and a lucky group of us  
will get a look behind the scenes this month.

August 2026 Newsletter items to: [editor.smu3anews@gmail.com](mailto:editor.smu3anews@gmail.com)

**NO LATER than Tuesday 21st June 2026**

Printed by Peter Woolley, Offset & Digital Printers, 31 Barlow Moor Road, Didsbury, M20 6TW. Tel: 0161 445 9607

Email: [matt@didsburyprinters.co.uk](mailto:matt@didsburyprinters.co.uk). Web: [www.didsburyprinters.co.uk](http://www.didsburyprinters.co.uk)

## OFFICERS and COMMITTEE

<b>Chair and External Ambassador</b>	Beryl Cowen		
<b>Secretary</b>	Andrew Bradbury	smu3a.secretary@gmail.com	
<b>Interim Treasurer</b>		smu3a.treasurer@gmail.com	
<b>Newsletter Editor</b>	Ian Burn	editor.smu3anews@gmail.com	
<b>Webmaster</b>			
<b>Membership Secretary</b>	Joanie Yoffe	smu3amembership@gmail.com	
<b>Assistant Membership Secretary</b>	Patricia Ford		
<b>Groups Co-ordinator / Vice Chair</b>	Diane Ward	smu3agroupscoord@gmail.com	
<b>Publicity</b>	Wena Stevenson		
<b>Safeguarding Officer</b>	Liz Williams	smu3a.safeguarding@gmail.com	
<b>Committee Member</b>	Bernadette Fallon		
<b>Committee Member</b>	Sandra Grant		
<b>Committee Member</b>	Barbara Frankl		
<b>Committee Member</b>	Carole Orgell-Rosen		
<b>Committee Member</b>	Jan Lancaster		

## SUPPORT (non-committee)

<b>Speaker Secretary</b>	Vacant		
<b>“Meet &amp; Greeters” Co-ordinator</b>	Barbara Aston		
<b>Newsletter Proofreader</b>	Megan Bennett		
<b>Facebook Editor</b>	Rosemary Mallace		
<b>Monthly Diary Sheet Production</b>	Liz Thornhill		
<b>Catering</b>	Shirley Shaw		
<b>Quiz Master</b>	Tom Grimshaw		

### GENERAL MEETING at DIDSBURY BAPTIST CHURCH

Tuesday 7th July 2026 at 2.00pm

**“The Lost Buildings of Manchester” by Jonathan Schofield**

See page 5 for details

**Parking at Didsbury Baptist Church** - Would members please note that there is no parking at the church with the exception of temporary drop-off for the catering team. (Blue Badge holders could use double yellow lines)

**If you have any information about members’ special birthdays, anniversaries, illness, bereavements, etc. please notify Kath Thompson on**



## Message from the Chair

Hello again,

I hope that you are all well and not too affected by the heat.

During the heatwave I wished that I could swim better. My great grandchildren were up for half term and went to our local baths twice during the very hot weather. I love the water, but I am a useless swimmer. When I venture into a pool, I walk in to just past shoulder level, and I am happy as long as I can feel the bottom or am near the side, so that I can get there in 2 strokes. I really envy good strong swimmers like my 2 grandsons, who are trophy winners for their clubs. They make it look so easy. I should have learnt by now but I hate my face being under water. I love the sea too and go in whenever I can. The sea is lovely, (except the Black Sea which, in Constanta, was slimy because of the sea weed). I am very aware that going out of my depth means that it's sink or swim.

A bit like starting a new u3a group. It may sink or it may swim. However, that should not stop us from having a go. Some groups are thriving and even have waiting lists. (Could there be someone in those groups who could start a second group to accommodate those waiting?). Some groups have 4 or 5, but as long as it is enjoyable, numbers don't matter. Keep going, as I know others will join if they get to know about you. To prevent sinking, please allow me to make a suggestion.

Couldn't some one in your group, (not necessarily the leader), write a short paragraph for the newsletter about what you do? This is especially good for new groups. Also, see Diane Ward or Wena Stevenson to get your new group in our brochure. Their details are on page 2 of this newsletter.

We have nearly 600 members, but I know many of you are still not in a group. Our u3a groups depend on you. So sink or swim, get stuck in!

The paddling pool in the garden, which is like a small group, might soon become Olympic sized. Start small and see the interest grow.

Happy swimming!

Beryl

### SMu3a welcomes the following new members

Noreen Parker	Stephanie Kenny	Win Montrose	Lauren Millar
Masmood Ahmed	Patricia Dunningham	Rosalind Arnold	Lorna Lawson
Hilary Hughes			

### Tradesperson Book

Is available at general meetings. It will only be of value if members use it, so please do.

## NATIONAL AND NORTH WEST NEWS

**National:** [www.u3a.org.uk](http://www.u3a.org.uk) for latest news of u3a around the country and courses/events on offer.

**National Newsletter:** The June newsletter can be found here [June National Newsletter](#).

**North West Region:** <https://northwestregion.u3asite.uk/> for the latest information and newsletter

## SOUTH MANCHESTER u3a NEWS

### South Manchester u3a General Meeting Speakers

<b>Tuesday 7<sup>th</sup> July 2026 at 2pm</b>	“The Lost Buildings of Manchester” by Jonathan Schofield
<b>Tuesday 4<sup>th</sup> August 2026 at 2pm</b>	“Centenarian Lady Hires Buff Butler” by Paul Isherwood
<b>Tuesday 1<sup>st</sup> September 2026 at 2pm</b>	“My Life in Broadcasting” by Roger Johnson
<b>Tuesday 6<sup>th</sup> October 2026 at 2pm</b>	“Great Forgers” by Jim Williams
<b>Tuesday 3<sup>rd</sup> November 2026 at 2pm</b>	“My Life and Challenges” by Dr. Carl Austin-Behan OBE DL
<b>Tuesday 1<sup>st</sup> December 2026 at 2pm</b>	A Performance by the SMu3a Ukulele Orchestra followed by a Christmas Quiz hosted by Tom Grimshaw
<b>Tuesday 5<sup>th</sup> January 2027 at 2pm</b>	“The Story of Pyrex” by Dr. Diana M Leitch MBE
<b>Tuesday 2<sup>nd</sup> February 2027 at 2pm</b>	“Underground Manchester” by Keith Warrender
<b>Tuesday 2<sup>nd</sup> March 2027 at 2.15pm</b>	Piano Recital by Andrew Wilde
<b>Tuesday 6<sup>th</sup> April 2027 at 2pm</b>	“The Work of Age UK” by Sharon Boswell
<b>Tuesday 4<sup>th</sup> May 2027 at 2pm</b>	“Raptor Migration and Birding in Southern Spain” by Dennis Atherton
<b>Tuesday 8<sup>th</sup> June 2027 at 2pm</b>	“An Oasis in the Pandemic” by Rev. Dr. Deirdre Brower
<b>Tuesday 6<sup>th</sup> July 2027 at 2pm</b>	“Strange Meetings - A Performance on Wilfred Owen” by Shaun Higgins
<b>Tuesday 3<sup>rd</sup> August 2027 at 2pm</b>	“On the cobbles: Early Days at Coronation Street” by Mark Llewelin
<b>Tuesday 7<sup>th</sup> September 2027 at 2pm</b>	TBA by Alison England
<b>Tuesday 5<sup>th</sup> October 2027 at 2pm</b>	“My Life in Crime Part 2” by Simon Michael
<b>Tuesday 2<sup>nd</sup> November 2027 at 2pm</b>	“Women of the Special Operations Executive During WW2” by Michele Higginbotham
<b>Tuesday 7<sup>th</sup> December 2027 at 2pm</b>	TBA
<b>Tuesday 4<sup>th</sup> January 2028 at 2pm</b>	TBA by Dr Diana M Leitch MBE
<b>Tuesday 1<sup>st</sup> February 2028 at 2pm</b>	“The Life of a BBC Reporter” by Kevin Fitzpatrick
<b>Tuesday 7<sup>th</sup> March 2028 at 2.15pm</b>	TBA by Professor Pete Naude
<b>Tuesday 4<sup>th</sup> April 2028 at 2pm</b>	“My Life at the Manor” by Gary Conley

**South Manchester u3a September General Meeting**

Tuesday 7<sup>nd</sup> July 2026 at 2pm

At Didsbury Baptist Church, School Lane

**“The Lost Buildings of Manchester” by Jonathan Schofield**



Manchester is a city of wonderful buildings, old and new. But it is also a city of lost buildings that range from the magnificent and the grand to the modest and the charming.

This talk will be illustrated with superb pictures, some rare and some never seen before. Jonathan will discuss some of the disappeared and demolished wonders. The talk will be also filled with great stories of significant people and some eccentric ones.

Jonathan Schofield has been a registered Blue Badge Guide since 1996 and is the Editor-At-Large of Manchester Confidential. He is also the Editor of Manchester Books Limited and has written several books on the North West. He is a regular broadcaster on local and national radio.

**DO YOU KNOW THE DIFFERENCE BETWEEN CREDIT AND DEBIT?**

**CAN YOU FIND YOUR WAY AROUND A BALANCE SHEET?**

**WOULD YOU LIKE TO BE AN INDEPENDENT EXAMINER OF OUR u3a ACCOUNTS?**



We are seeking someone who can examine the South Manchester u3a accounts at the end of the year and check that they are correct. The checking takes place in early January.

You don't need to be an accountant to do this job. You just need to have an understanding of basic record keeping.

As an independent examiner you can be a member of our u3a but you must not be a Trustee or a member of the committee.

You must also not be related to a Trustee or a member of the committee.

If you are interested in helping out as an independent examiner and would like more information, please contact our Treasurer at: [smu3a.treasurer@gmail.com](mailto:smu3a.treasurer@gmail.com)

## THE HISTORY OF BRIDGEWATER HALL



The Bridgewater Hall cost around £42 million to build in the 1990s, and hosts over 250 performances a year. It is home to the 165-year-old Hallé Orchestra as well as to the Hallé Choir and Hallé Youth Orchestra and it serves as the main concert venue for the BBC Philharmonic.

The building sits on a bed of 280 springs intended to insulate it from external sound. The hall is named after the Third Duke of Bridgewater who commissioned the eponymous Bridgewater Canal that crosses Manchester, although the hall and waterside frontage is situated on a specially constructed arm of the Rochdale Canal.

Proposals to replace Manchester's historic concert venue, the Free Trade Hall, were made after it was damaged in the Second World War, but the hall, which was home to The Hallé orchestra was repaired and renovated in the 1950s. Despite being a popular venue, the Free Trade Hall, built in the 1850s, had poor acoustics and outdated audience facilities. Throughout the 1970s and 1980s, several schemes to replace it were considered but the project became more likely in 1988 after the creation of the Central Manchester Development Corporation.



The Free Trade Hall



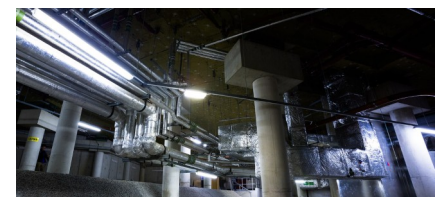
Former bus station on Lower Mosley Street

In the 1990s, land east of Lower Mosley Street and north of Great Bridgewater Street adjacent to the G-Mex exhibition centre (now Manchester Central Convention Complex) which was occupied by a former bus station and car park near the Rochdale Canal was identified as the site for a new hall. A competition inviting architects to present designs for the new concert hall was launched and a proposal by Renton Howard Wood Levin (RHWL) architects was chosen. The development included the construction of a basin on a specially built short arm of the Rochdale Canal and part of the Manchester and Salford Junction Canal, providing a waterfront setting for the hall.

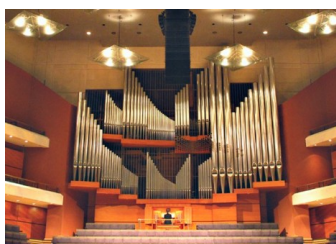
The Bridgewater Hall held its first concert on 11 September 1996 and was officially opened on 4 December by Queen Elizabeth II and the Duke of Edinburgh. The concert hall was one of a number of structures built in the 1990s that symbolised the transition to a new and modern Manchester following de-industrialisation and the 1996 bombing.

The Bridgewater was well received and won a number of awards. In November 1996, only months after opening, the concert hall won the RIBA North West award. In 1998 the hall won the Civic Trust Special Award, which is given to a building which enhanced the appearance of a city centre.

The main auditorium sits on a foundation of earthquake-proof isolation bearings that insulate it from noise and vibration from the adjacent road and Metrolink line. The hall's 26,500 tonne superstructure rests on 280 GERB isolation bearings consisting of rows of steel springs between concrete piers. The Bridgewater Hall is the first concert hall built with this technology.



The structure is mostly formed from solid, reinforced concrete, "moulded and cast like a vast sculpture" — even the ceiling is concrete. The auditorium has a double-skinned roof with a stainless steel outer shell. The lower part of the hall is built of deep red sandstone from Corsehill Quarry in Annan, Scotland; its upper walls are clad in aluminium and glass. The interior features significant use of Jura limestone.



Inside the hall, the focal point is an enormous, £1.2 million pipe organ, consisting of 5,500 pipes and four manuals, built by Marcussen & Son, which dominates the rear wall of the main auditorium. At the time of construction, the organ was the largest such instrument to be installed in the UK for a century.

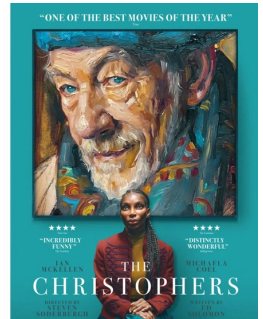
A group of us are lucky enough to be going on a "behind the scenes" tour of the hall this month. We can't wait!

Ian Burn

***Two old men, two very different lives ...***

**Film: The Christophers**

Julian Sklar, now in his eighties, has in the past been an admired artist, as well as a TV personality with a biting line in art criticism. He is now a fading recluse, making a bob or two from recording cameos (brief video messages for individuals prepared to pay for the great man to address them personally and say what they want to hear). Ian McKellen portrays the character with relish and the camera dwells on every sign of ageing: the wrinkles, the sagging jowls, the seedy dressing gown.

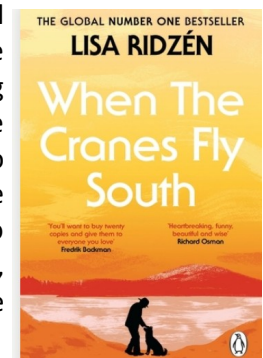


The film's title 'The Christophers' refers to a rumoured set of unfinished portraits of a long-ago lover: the affair had ended badly, leaving Julian feeling betrayed. His two estranged adult offspring want to get their hands on these fabled paintings to sell for an eye-watering sum. They hire Lori Butler, a young art restorer played by the wonderfully inscrutable Michaela Coel, to aid them by gaining Julian's confidence, but the plot becomes convoluted with an unexpected outcome.

There is great acting in the two main roles, and the other delight is the setting: Julian's elegant but shabby Georgian townhouse filled with a treasury of art materials, curios, books, papers, and inspirational objects.

**Novel: When The Cranes Fly South**

The narrator is Bo, an 89-year-old man living alone in his small house in the woods of rural northern Sweden. It's clear that he is angry with his son Hans, who wants to organise his life and rehome Bo's beloved companion, Sixten the elkhound. Initially I thought this was going to be a slight book, an easy read with no depth, but it grew on me once I tuned in to the stream-of-consciousness style. His ramblings tell us a lot about Bo's life, which he seems to be reviewing through the lens of old age: his overbearing father, his hard work at the sawmill, his happy marriage, and his long friendship with his best buddy Ture. We are also presented with uncomfortable details of his present state — aching joints, arthritic fingers, chest pains, memory lapses, and the indignity of incontinence — supplemented with the brief notes that visiting carers leave in the agency logbook.



It's the debut novel of Lisa Ridzén, inspired by her own grandfather's final years and informed by her research into masculinity in Swedish rural communities. The admirable translator Alice Menzies has captured just the right tone for the old man's recollections and colloquial expression.

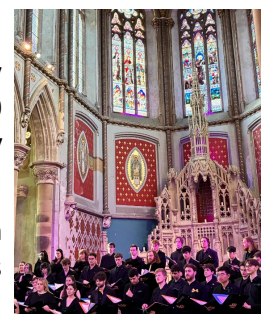
**Finally: So many choirs, so much choice ...**

Here in Manchester there's a multitude of vocal ensembles, ranging from our own u3a Community Sing-Along group, to professionals at the top of their game. I've been to some brilliant concerts over the last few months, including:

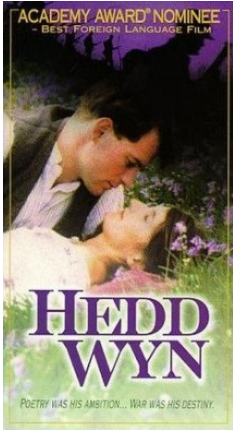
**Voces Pulchrae:** an amateur choir based in Bramhall, who specialise in singing medieval and early Renaissance music to a high standard.

**Sing With the Hallé:** an annual opportunity for anyone who likes to sing to join a day workshop in the Bridgewater Hall, this year culminating in a thrilling concert with about 600 voices and full orchestra of highlights from Mendelssohn's 'Elijah' (declaration of interest: my sister and five friends flew over from Jersey specially to take part).

**The Kantos Chamber Choir:** a highly trained group of singers who celebrated their tenth anniversary in June at Gorton Monastery, with a polished programme ranging from Thomas Tallis's wonderful motet 'Spem in Alium' from 1570 to Bob Dylan's 'Blowin' in the Wind'.



## GETTING BY IN WELSH



In June, the Getting by in Welsh group watched a bilingual film called Hedd Wynn at my house. There were 13 of us and we enjoyed food and fellowship as well.

The film was about a farmer who wrote poetry and wanted to enter the National Eisteddfod. The First World War broke into his dreams and, after a lot of heart searching and ridicule, he enlisted. Whilst waiting for action, he was allowed to submit his poetry for the eisteddfod after the captain read it. He won the chair and was crowned The Bard posthumously. He was killed at Passiondale, not knowing that he had achieved his dream.



Beryl Cowen

## TAI CHI FOR BEGINNERS

Peggy Foster has started up a new Tai Chi group aimed specifically at beginners.

You are very welcome to come to one of these meetings as a taster session without any commitment to joining the class long-term. The Infinite Tai Chi form which Peggy teaches, has 5 stages to it and takes a year or two to learn in its entirety. But Peggy teaches it in a really gentle, no right or wrong way, and her main focus is always on making sure that everyone in her classes relax and enjoy them, and then feel great at the end of them!



Classes take place at 2.30-3.15 every Tuesday in Emmanuel Church Lower Parish Hall on Barlow Moor Road, Didsbury.

For more information, contact Peggy Foster:

**u3a** learn,  
laugh,  
live  
**South Manchester**

**Next year will be 25 years since South Manchester u3a was first set up.**



That means that in just 1 years time, we will be celebrating our silver anniversary.

We would like to put together an article for the newsletter in September 2027 commemorating the setting up of SMu3a. Were you present at that first meeting in 2002 or did you attend those early meetings in 2002 and 2003? What are your memories of those meetings? What groups were being offered? What groups did you choose to join? What new friendships did you make in those early days which still last to today? Do you have any photographs of those days? Do you have any documents or flyers from 2002/03?

I know that our 25th anniversary is still a year away, but I would like to gather your memories now. It sounds awful, but we are all getting older and I would hate for those memories to be lost.

If you can help in any way, even if you think that your contribution is trivial, please get in touch with the Editor: [editor.smu3anews@gmail.com](mailto:editor.smu3anews@gmail.com)

If you prefer to write something down, please hand it to Ian Burn or any other committee member at our monthly meeting. If you can supply a photograph, I can scan it and let you have the original back.

## COMMUNITY SING-ALONG GROUP



We've recently enjoyed what was perhaps our best gig ever at BELONG. Even if I say so myself, our singing was brilliant and, alongside great accompaniment by Louis De Satge, the audience response was overwhelmingly appreciative. It's the sheer joy of the audience that makes our group so worthwhile. Our programme was based on the well known songs from Musicals of the 50s.

The next outing on **Thurs 16th July** might be trickier and require some home work on something like Youtube. We're going to have a second shot at songs from the more recent musicals such as Evita, Cats, Phantom, Les Mis, etc., and end with some ABBA.

At the end of the month on **Monday 27th July** at the Seniors' Holiday Club run by a group of Burnage Churches at St Margaret's we will sing a Medley of songs from across the 20th century. It should be fun. If you think you might enjoy singing songs you probably know well, then give me a bell. Lyrics provided.

Our next performances are: -

**Thursday 16th July 2026 at 2pm at BELONG (Morris Feinmann) M20 2UW**

**Monday 27th July 2026 at 3pm for 3.15pm at St Margaret's Church, Burnage Lane**

New members are always welcome. Anyone who enjoys singing well known songs (covering a fair cross-section of songs from 20th century) should try it. We sing in unison and lyrics are provided. Where some tunes are less well-known we each find YOUTUBE a good resource, so some times a little prep is a good thing!

**Contact Mike Evans for more details on**

## CREATIVE PHOTOGRAPHY EXHIBITION

Photographs capture a moment in time and usually resemble what we see. They can also communicate feelings or generate an atmosphere. Imaginative use of camera settings, home-made filters, intentional camera movement, multiple exposure, editing and physical alterations to prints can express the photographers' creativity. Sometimes, a camera isn't needed at all, just light-sensitive paper and the sun.

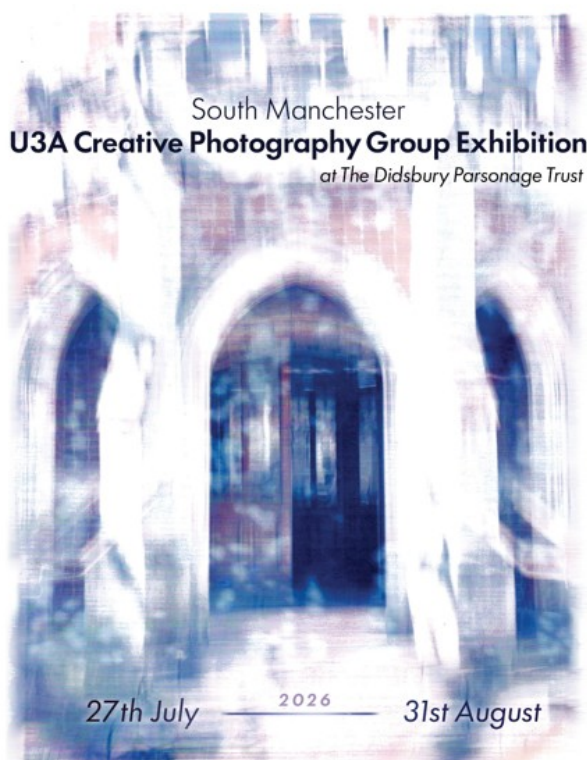
In the SMu3a Creative Photography Group, we are encouraged to experiment and to have fun. We often use phone cameras, and the results can be magical! Technical perfection has little to do with it.

If you'd like to see some slightly different photographs of Didsbury, come to our exhibition at: -

**The Old Parsonage, Stenner Lane, Didsbury M20 2RQ  
from July 27th until August 31st 2026.**

If you think this is your thing, why not come to one of our meetings to find out more? They are held every second Monday at 10.30am, upstairs at The Old Parsonage. (Please note we are not meeting in August and September this year).

**SMu3a Creative Photography Group**



The Old Parsonage, Stenner Lane,  
Didsbury, Manchester, M20 2RQ

DIDSBURY  
PARSONAGE  
TRUST



## PLAYREADING GROUP

In June, the Playreading Group celebrated 15 years together. The group has been led for all of this time by the indomitable Helen, who finds plays with the right number of characters and then voices the stage directions.

There have been many changes in personnel over the years but the fun remains. The group retains its mixed ability and doesn't aim for great acting but, of course, there are some excellent performers. Roles are allocated on a 'gender blind' basis. Many of the plays are a little dated, with lots of French windows, Majors and maids, but there is usually laughter plus an occasional tear. Fifteen years speak for themselves. This is a lively, well-appreciated group. Long may it last!

**Russell Ramsden**



## HOLIDAY GROUP IN SCOTLAND

**Tuesday 23rd to Saturday 27th March 2027**

**Four nights bed, breakfast and 4 course evening meal at the Duke of Gordon Hotel in the Cairngorms National Park for just £375 per person!**



This includes all travel from Didsbury, a cruise on Loch Ness, a visit to Glamis Castle, evening entertainment in the hotel and a special Scottish night with a candlelit dinner and a traditional piper.

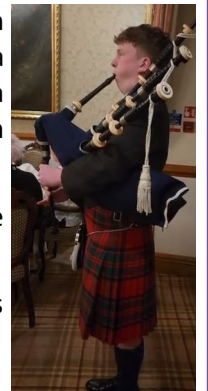
There is an optional visit to a distillery for an additional £15.

A group of us went to the Duke of Gordon in February this year and had a great time. It's a lovely warm, comfortable hotel with a welcoming coal fire, a cosy, well-stocked bar, a formal dining room and a large ballroom with dance floor. There is also the chance of seeing the Northern Lights from the hotel car park!

At the moment there are 25 rooms for single occupancy with no supplement, and 12 twin/double rooms for sharing.

The single occupancy rooms will be snapped up very quickly, so if you're interested, contact me as soon as possible.

**Anne Clarke:**

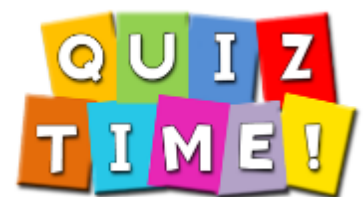


## QUIZ GROUP

I recently joined South Manchester u3a, having moved to Didsbury from Chesterfield. I was a member of Chesterfield u3a for many years where I ran a monthly quiz group which proved popular.

I am looking to start a similar group here and would ask that you email me on xxxxxxxxxxxxxxxx if you are interested in joining, so that I can see if there is enough interest.

**Val Youde**



## South Manchester u3a Walking for Health Walk Group 2 Walk – Wednesday 8<sup>th</sup> July 2026



### Werneth Low Country Park

A 2.5-mile walk. First half some fairly steep uphill. Some steps, no stiles. Wear suitable shoes or boots, bring a wet coat and a bus pass if you have one. Meet at Stockport Interchange by information office at 10.30. Lunch at The Grapes pub in Gee Cross. If you want to come, phone Anne Clarke on

## South Manchester u3a Walking for Health Walk Group 1 Walk - Tuesday 28<sup>th</sup> July 2026

### Daisy Nook Country Park, Oldham

A 2.5-mile walk. No stiles. Short climb at the start with some steps. Can be muddy in wet weather. Wear suitable shoes or boots, bring a wet coat and a bus pass if you have one. Meet at Piccadilly Gardens by Queen Victoria monument (opp. Travelodge) at 10.20. Lunch at the Daisy Nook Garden Centre. If you want to come, phone Ian Burn on



## Opera at Menorah

*Opera for All and Menorah Synagogue*

### Opera Appreciation with Diana Rosenthal

All events are on Thursdays at 1.30pm

£10 per performance, paid at the door using card payment

Menorah Synagogue, 198 Altrincham Road, Wythenshawe, Manchester, M22 4RZ

9th July 2026

Go to <https://menorah.org.uk/opera/> for more information



### Ariadne auf Naxos (R Strauss)

The richest man in Vienna has commissioned an evening's entertainment. But when a tragic opera and a comedy troupe are forced to share the same stage, sparks fly. Strauss's opera-within-an-opera is part farce, part dream-like fantasy, set to one of his most luscious scores.



## Didsbury Probis Programme

Didsbury and District Probis Group meet on the 1<sup>st</sup> and 3<sup>rd</sup> Thursday of the month. Unlike many Probis clubs, we are a mixed group of men and women. Annual membership is £40.

Thursday 16th July 2026

### "The Arctic and its Future" by Terry Callaghan

*Prof. Callaghan has worked in every Arctic country in the world; his illustrated talk gives examples of changes in the Arctic, their local consequences and the implications for the rest of the world.*

All meetings are held in the Didsbury Baptist Church, School Lane, opposite the Scout Hut and Didsbury Metrolink station.

Tea/coffee and biscuits are served from 10.30am before the talk at 11am.

Visitors are very welcome. Any donations from visitors to help with running costs would be very helpful.

## QUIZ

Answer the clues then spot the link between each set of answers

Lynx



- A**
1. In the medical world, what is hypertension more commonly known as?
  2. Of all the animals in the world, which type of specific marine creature has the heaviest brain?
  3. Which character from TV's "Muppet Show" was constantly lusting after Kermit the Frog?
  4. Which UK top ten hit from Ike and Tina Turner opens with the line "When I was a little girl, I had a ragdoll"?
  5. Gauche in French means..?
- B**
1. Hibiki, Nikka and Suntory are all famous brands of which alcoholic drink?
  2. Which capital city is the third largest city in the Americas behind Sao Paulo and Mexico City?
  3. Which professional baseball team are based in the New York borough of the Bronx?
  4. Which soft drink brand was launched in the UK in 1950?
  5. What is Canada's largest province by area?
- C**
1. Which musician was born Frederick Bulsara?
  2. Snowy is the name of the pet dog of which Belgian cartoon character?
  3. What is a 5 cent coin known as in the U.S.?
  4. Which slang term for a police officer comes from "someone who captures"?
  5. When emailing, what does bcc stand for?
- D**
1. What is the capital city of Belgium?
  2. What is the nickname of Bournemouth F.C.?
  3. Which Beatles song has "for ever" in the title?
  4. Which character in the movie Toy Story continually loses parts of his body?
  5. Describe the vessel in which the owl and the pussycat went to seam.

ANSWERS ON PAGE 16

**Walking for Health Group 1 – Tuesday 26<sup>th</sup> May 2026**

**Sale Water Park and Priory Gardens**



Today's walk took place in the sweltering heat of 32°C. We met up at Sale Water Park tram station and almost immediately, discussions took place about whether it was wise to walk in the extreme heat. In the end, 13 of us opted to do the full walk, given that there would be sufficient shade along the way, and the rest decided to take a leisurely stroll around the lake.

We set off around part of the lake then turned right to walk up to the bank of the river Mersey. We followed the river path for a short while in the blistering sun. Not too much later, we then veered left back into Sale Water Park, skirting around the top of the lake.

From here, we branched off under the motorway and into Priory Gardens. This site was never religious. It takes its name from a Georgian-style manor, Priory House, built in 1711 by Manchester attorney Thomas White. The estate remained in the White family for generations, housing notable historical figures like co-founder of the Manchester Infirmary, Dr. Thomas White. His son, the famous surgeon Dr. Charles White (1728–1813), was known for his eccentricities—including keeping the embalmed body of his friend Hannah Beswick (the "Manchester Mummy") on the roof of the Priory. The manor was demolished in 1932 after being sold to the Sale Council in 1923.

Exiting Priory Gardens, we crossed the footbridge over the motorway, dropping down into Trafford Water Activity Centre for lunch at the Boathouse pub. Thankfully the pub was air-conditioned and the food was lovely.

## SMu3a Groups A-Z LIST

**Check Group News and this month's diary. Contact Group Leader before attending.**

<b>ANGLO SAXON AND MEDIEVAL HISTORY</b>	Meetings are on the 1st and 3rd Mondays of the month at 10.30 via Zoom. This group covers all aspects of Anglo Saxon and Viking life in depth through language and social history readings and discussions. <b>Beryl Cowen</b>
<b>ART APPRECIATION</b>	Monthly meetings held at Didsbury Parsonage on the afternoon of the third Wednesday of the month cover a wide variety of artistic topics. Talks are either by the leader Diane Ward or guest speakers, followed by tea and discussion. <b>Diane Ward</b>
<b>BIRDWATCHING AND NATURE</b>	Meetings take place 1st Wednesday of the month from 11am to 1pm. No experience necessary. <b>Rita Berriman</b>
<b>BOARD GAMES</b>	Lots of different games are played by this group which meets at the Parris Wood pub from 2-4 pm on the second Friday of the month. <b>Christine Salamone</b>
<b>BOOK GROUP 1</b>	Meeting at 10.30 am in Meg's home in Didsbury on the first Wednesday of the month. A small friendly group who enjoy reading and discussing a wide variety of books. <b>Meg Davis</b>
<b>BOOK GROUP 2</b>	Held at Didsbury Library 1.30 pm on the fourth Thursday of the month, meetings are led by members in turn to discuss titles suggested and agreed by the group members. <b>Tom Grimshaw</b>
<b>BOOK GROUP 3</b>	This group meets on the second Thursday of the month at 1.30 pm. We meet at Emmanuel Parish Centre on Barlow Moor Road. <b>Johanna Keane</b>
<b>BRIDGE</b>	This group is for experienced ACOL bridge players. We meet every Friday from 9:45 to 12 noon at the Nazarene College, Didsbury. It isn't necessary to have a bridge partner but you must be prepared to play with anyone in the group where necessary. <b>Liz Thornhill</b>
<b>BRIDGE for BEGINNERS</b>	This group meets weekly on Mondays from 1.30-3.30, at Emmanuel Parish Centre on Barlow Moor Rd. This group is for beginners and improvers although more experienced players are also welcome to join. You don't need a partner. <b>Hilary Poole</b>
<b>CINEMA</b>	Meeting on the last Friday of the month at 12.15 in the downstairs bar of HOME, 2 Tony Wilson Place. This group watches a variety of films, then meets afterwards to discuss them. Group Leader emails what's on the Tuesday before the meeting. <b>Russell Ramsden</b>
<b>COMMUNITY SING-ALONG</b>	This group sings well known songs in unison (no rehearsal time needed) in residential homes. Dates and times vary. <b>Mike Evans</b>
<b>CREATIVE PHOTOGRAPHY</b>	The group meets at Didsbury Parsonage at 10.30 on the second Monday of every month. The emphasis is on creativity rather than technical skill. <b>Ann Howarth</b>
<b>CREATIVE WRITING</b>	We meet at Withington Library on the last Friday of the month at 10.30 am. Members read and discuss their writings. New members always welcome. <b>Sandra Grant</b>
<b>CURRENT AFFAIRS</b>	This group meets to share and discuss items in the news on the 4th Thursday of the month at 1.30 pm in Ye Olde Cock pub, Didsbury. <b>Adrienne Simpson</b>
<b>DRAMATIC READERS</b>	Held on the 3rd Friday of the month, both face to face and by Zoom. <b>Beryl Cowen</b>
<b>EGYPTOLOGY</b>	This group meets at 10.30-12.30 on the third Thursday of the month at Didsbury Parsonage, to discuss all aspects of early Egyptian art and culture. <b>Kathryn Fyfe</b>
<b>FRENCH CONVERSATION</b>	We meet on the third Tuesday of the month 2 - 3pm at HOME cafe. Speakers of all levels of conversational French are welcome. <b>Jean Thompson</b>
<b>GERMAN CONVERSATION</b>	This group is for those who would like to practice their spoken German. Last Friday of the month at the Nazarene. <b>Marie O'Sullivan</b>
<b>GETTING BY IN WELSH</b>	At 10.30 on the first Friday of every month, this group meets at Burnage Library, to discuss the language, history and culture of Wales. <b>Beryl Cowen</b>

<b>HOLIDAY GROUP</b>	Keep an eye on the monthly newsletter for information about forthcoming holidays.
<b>ITALIAN CONVERSATION</b>	We are a small group looking to improve our Italian through listening and conversation. Please note that there is a separate group for learners – see Parliamo Italiano below. We meet on the 1st and 3rd Friday mornings of the month from 10.30 – 12.00. However, the group is currently full. If you like to be put on the waiting list contact: <b>Diane Ward</b>
<b>KEEP FIT</b>	This fitness group caters for a variety of fitness levels – there is no competition! It meets every Friday morning at 11.30 at St Nicholas Church Hall in Burnage. <b>Anne Clarke</b>
<b>KNIT AND NATTER</b>	We work on either our own projects or on items for charity. Don't worry if you can't knit—this is the place to learn. It's never too late! We meet on the last Wednesday of the month at Nazarene College. <b>Diane Ward</b>
<b>LOCAL INTEREST VISITS</b>	These will be advertised in the newsletter from time to time. <b>Jill Evans</b>
<b>LUNCH CLUB</b>	The club meets monthly at a variety of local restaurants and pubs, chosen with a view to ease of parking or public transport as well as price. <b>John Olbrich</b>
<b>OPERATIC AND VOCAL APPRECIATION SOCIETY (OVAS)</b>	Lovers of opera and music meet from 3.30 – 5.45 on the last Wednesday of every month. <b>Len Evans</b>
<b>PIANO GROUP</b>	We are a small group for piano players to play to each other in a supportive and relaxed setting, and share ideas about anything piano-related. All types of music and all levels welcome. We meet on the 4 <sup>th</sup> Thurs of month at Didsbury Baptist. <b>Hilary Taylor</b>
<b>PARLIAMO ITALIANO Let's speak Italian!</b>	A friendly and fun group for people who have little or no Italian but would like to learn. We aim to be able to understand and use familiar everyday expressions and basic phrases which would be of value on an Italian holiday. We aim to be able to interact in a simple way and to improve with time so that in due course, members could move on to the Italian Conversation group or attend both. We meet at St Christopher's Church, Moorgate Avenue, from 10.00 – 11.30 on the 2nd and 4th Fridays of the month. <b>Andrew Bradbury</b>
<b>PHILOSOPHY</b>	This group meets at 1.30 pm at Chorlton Library on the second Tuesday of the month. <b>John Olbrich</b>
<b>PLAYREADING</b>	Meetings are at Withington Library at 1.30 on the third Tuesday afternoon of the month. Numbers are limited for this group, but please contact the group leader to register your interest. <b>Helen Nicolson</b>
<b>POETRY APPRECIATION</b>	Poems on a chosen theme are discussed on the 1st Monday of the month from 11.00-12.30 at Victoria Grange, Barlow Moor Road. The group is currently full. Contact group leader to go on waiting list. <b>Lynne Taylor</b>
<b>PSYCHOLOGY</b>	This group meets on the 1st Monday of the month at 2pm via Zoom and the 4th Monday of the month face to face at Burnage Library at 1.30pm. <b>Beryl Cowen</b>
<b>SINGING FOR FUN</b>	This group meets on the 2nd and 4th Tuesdays of the month at 2pm at Didsbury Baptist Church <b>Judith Newton</b>
<b>SPANISH CONVERSATION</b>	This group meets on the 1 <sup>st</sup> and 3 <sup>rd</sup> Thursdays of the month at 2 pm at the Slug and Lettuce in Didsbury <b>Debbie Delange</b>
<b>TABLE TENNIS AND BADMINTON</b>	Every Tuesday from 10.00-12.00, this group meets at the Armitage Centre, Moseley Road, Fallowfield. Equipment can be provided and the cost per session is £3.50. <b>Ray Dumbleton</b>
<b>TAI CHI</b>	Gentle exercise which benefits balance and calmness at the Lower Hall, Emmanuel Offices, behind the church from 1-2 pm every Tuesday. <b>Peggy Foster</b>
<b>TAI CHI FOR BEGINNERS</b>	Gentle exercise which benefits balance and calmness at the Lower Hall, Emmanuel Offices, behind the church from 2.30 - 3.15pm every Tuesday. <b>Peggy Foster</b>

<b>UKULELE</b>	Would you like to strum and sing along with the ukelele group? Beginners are welcome. We meet from 10 – 11.15 at the Upper Hall of Emmanuel Parish Centre, behind the church, every Thursday <b>Gerard Allcock</b>
<b>WALKING FOR HEALTH 1</b>	Walks of around 3 miles are enjoyed by this group on the last Tuesday of every month. Details are given in the newsletter. <b>Ian Burn</b>
<b>WALKING FOR HEALTH 2</b>	This group meets on the second Wednesday of every month to follow the same route as Walking for Health Group 1. <b>Anne Clarke</b>
<b>WELSH CONVERSATION</b>	Siawns am Sgwrs. For learners who have already made a good start with conversations and want more practice. Not suitable for beginners. We meet monthly on the 2nd Wednesday from 10am - 12 at the Didsbury pub on Wilmslow Road. <b>Megan Bennett</b>

### ANSWERS TO QUIZ

**A** 1. High blood pressure 2. Sperm whale 3. Miss Piggy 4. River Deep, Mountain High 5. Left

**The Link: Types of bank (Blood, sperm, piggy, river, left)**

**B** 1. Whiskey 2. Lima 3. New York Yankees (Yankee) 4. Tango 5. Quebec

**The Link: Code word in the Nato phonetic alphabet**

**C** 1 Freddie Mercury 2. Tin Tin 3. Nickel 4. Copper 5. Blind carbon copy

**The Link: Elements**

**D** 1. Brussels 2. Cherries 3. Strawberry Fields Forever 4. Mr Potato Head

5. A beautiful pea green boat

**The Link: Fruit and Veg**



# July 2026

Monday	Tuesday	Wednesday	Thursday	Friday
		<p><b>1</b> Book Group 1. Meg's house <b>10:30</b> (Closed Group).</p> <p>Bird Watching &amp; Nature <b>11:00–13:00</b> Note: If interested, please contact Rita: 0735 433 0844</p>	<p><b>2</b> Ukulele <b>10:00 - 11:15</b></p> <p>Spanish Conversation <b>14:00</b></p>	<p><b>3</b> Bridge <b>9:45 - 12:00</b></p> <p>Italian Conversation <b>10:30 – 12:00</b></p> <p>Getting by in Welsh <b>10:30</b> Burnage Library.</p> <p>Keep Fit <b>11:00-12:00</b> Note: new time.</p>
<p><b>6</b></p> <p>Anglo Saxon and Medieval History via zoom <b>10:30</b></p> <p>Poetry Appreciation <b>11:00</b> Victoria Grange</p> <p>Beginners/ Improvers <b>Bridge 13:15-15:30</b> <i>New players see 13<sup>th</sup></i></p> <p>Psychology <b>14:00</b> Zoom</p>	<p><b>7</b></p> <p>Table Tennis / Badminton <b>10:00</b></p> <p>TaiChi: <b>No class.</b></p> <p><b>General Meeting 14:00- 16:00</b> <b>Didsbury Baptist Church</b></p>	<p><b>8</b></p> <p>Walking for Health 2. See Newsletter</p> <p>Welsh Conversation <b>10am</b> (for 10:15) to <b>12pm</b> The Didsbury Pub Wilmslow Rd</p>	<p><b>9</b></p> <p>Ukulele <b>10:00 - 11:15</b></p> <p>Book Group 3. <b>13:30</b> HOME Café</p>	<p><b>10</b></p> <p>Bridge <b>9:45 - 12:00</b></p> <p>Parliamo Italiano (Andrew) <b>10:00-11:30</b> St. Christopher's Church Moorgate Ave. M20 1HE</p> <p>Keep Fit <b>11:00-12:00</b> Note: new time.</p> <p>Board Games <b>14:00-16:00</b> Parrswood Pub</p>
<p><b>13</b></p> <p>Creative Photography <b>10:30</b> The Parsonage</p> <p>Beginners/ Improvers <b>Bridge 13:15-15:30</b> <i>Please Note: New players <u>must</u> email <u>before</u> the session date.</i></p>	<p><b>14</b></p> <p>Table Tennis / Badminton. <b>10:00</b></p> <p>TaiChi <b>13:00-14:00</b></p> <p><b>New Group:</b> Beginners Tai Chi <b>14:30 - 15:15</b></p> <p>Philosophy <b>13:30</b> Chorlton Library</p> <p>Singing for Fun <b>14:00–16:00</b> Didsbury Baptist Church</p>	<p><b>15</b></p> <p>Lunch Group. TBA. To be added to the notification list please contact:</p> <p>Art Appreciation <b>14:00</b> The Parsonage</p>	<p><b>16</b></p> <p>Ukulele <b>10:00 - 11:15</b></p> <p>Egyptology <b>10:30-12:30</b> The Parsonage</p> <p>Spanish Conversation <b>14:00</b></p> <p>Community Sing-Along <b>14:00</b> BELONG M20 2UW</p>	<p><b>17</b></p> <p>Bridge <b>9:45-12:00</b></p> <p>Italian Conversation <b>10:30-12:00</b></p> <p>Keep Fit <b>11:00-12:00</b> Note: new time</p> <p>Dramatic Readers <b>14:00</b> Northern Tennis Club.</p>
<p><b>20</b></p> <p>Anglo Saxon and Medieval History via zoom <b>10:30</b></p> <p>Beginners/ Improvers <b>Bridge 13:15-15:30</b> <i>New players see 13<sup>th</sup></i></p>	<p><b>21</b></p> <p>Table Tennis / Badminton. <b>10:00</b></p> <p>TaiChi <b>13:00-14:00</b></p> <p><b>New Group:</b> Beginners Tai Chi <b>14:30 - 15:15</b></p> <p>Playreading <b>13:30</b></p> <p>French Group <b>14:00-15:00</b> HOME Café</p>	<p><b>22</b></p>	<p><b>23</b></p> <p>Ukulele <b>10:00 - 11:15</b></p> <p>Piano Group <b>11:00-12:30</b>. Didsbury Baptist Church. New venue. <i>For more details, contact Hilary:</i></p> <p>Current Affairs <b>13:30</b> Old Cock Pub Didsbury</p> <p>Book Group 2. <b>13:30</b> Didsbury Library (Closed group)</p>	<p><b>24</b></p> <p>Bridge <b>9:45-12:00</b></p> <p>Parliamo Italiano (Andrew) <b>10:00-11:30</b> St. Christopher's Church Moorgate Ave. M20 1HE.</p> <p>Creative Writing <b>10:30</b> Withington Library</p> <p>Keep Fit <b>11:00-12:00</b> Note: new time</p>
<p><b>27</b></p> <p>Psychology <b>13:30</b> Burnage Library.</p> <p>Beginners/ Improvers <b>Bridge 13:15-15:30</b> <b>Note: today only IN UPPER HALL.</b></p> <p>Community Sing-Along at the Holiday Club, St Margaret's Church Burnage Lane <b>15:00</b></p>	<p><b>28</b></p> <p>Table Tennis / Badminton <b>10:00</b></p> <p>TaiChi <b>13:00-14:00</b></p> <p><b>New Group:</b> Beginners Tai Chi <b>14:30 - 15:15</b></p> <p>Singing for Fun <b>14:00–16:00</b> Didsbury Baptist Church</p> <p>Walking for Health 1. See Newsletter.</p>	<p><b>29</b></p> <p>Knit &amp; Natter <b>14:00-15:30</b> Nazarene Conservatory</p> <p>OVAS <b>15:00 – 17:15</b></p>	<p><b>30</b></p> <p>Ukulele <b>10:00 - 11:15</b></p> <p>Spanish Conversation <b>14:30</b> Nazarene</p>	<p><b>31</b></p> <p>Bridge <b>9:45-12:00</b></p> <p>German Conversation <b>10:30</b></p> <p>Keep Fit <b>11:00-12:00</b> Note: new time</p> <p>Cinema <b>12:15</b></p>